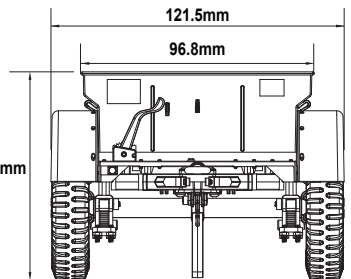
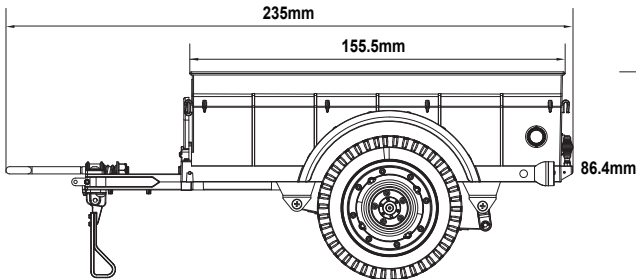
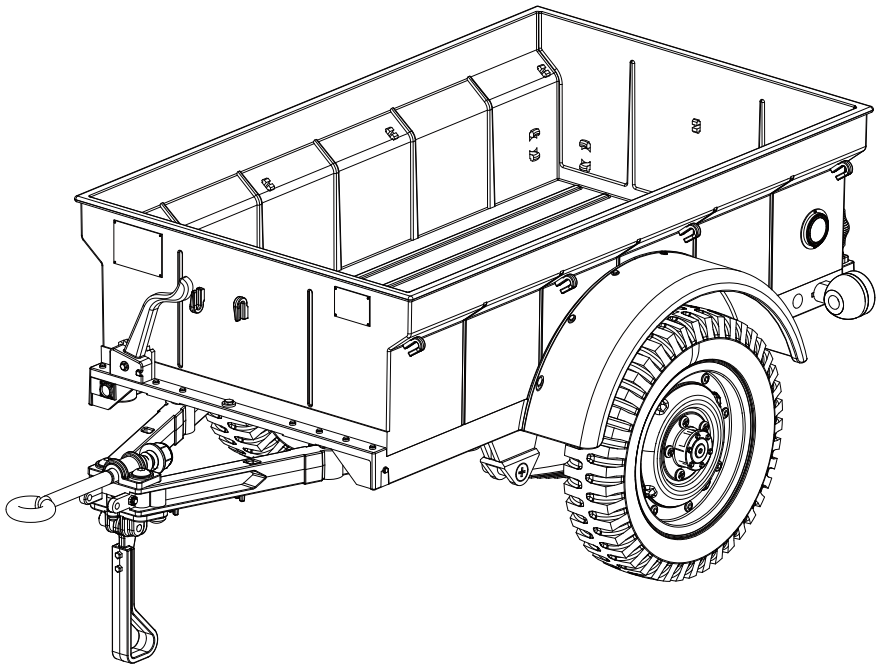


RO HOBBY

1/12 U.S. ARMY 1/4-TON TRAILER



1:12 U.S. Army 1/4-ton Trailer

When the U.S. Army developed the World War II jeep, it needed a cargo trailer that would track behind the vehicle. The first trailer was defined the "1/4-ton, 2-Wheel, Cargo, Amphibian". More than 150,000 jeep trailers were built by over ten different companies, during World War II alone.

During the war, the trailer partnered with the jeep to undertake the most terminal and dangerous tactical transportation task. In addition to transporting thousands of tons of ammunition and fuel to every trench on the front line, it was also filled with Cola, Marlboro, Playboy and girls' love letters.

This 1:12 scale trailer from ROC HOBBY is presented to you as an equally detailed item as the 1:12 MB Scaler it is intended to be used with. Scale ammunition boxes, oil barrels, food and other supplies will be launched one after another in the future to add to the scale experience and realism of these beautifully detailed Scale vehicles.

当美国陆军开发二战吉普车时，还需要一辆能够跟在车辆后方的货运拖车。第一辆拖车被定义为“1/4吨2轮两栖货车”。仅在第二次世界大战期间，就有十多家不同的公司生产制造了超过 150,000 辆吉普拖车。

战争期间这台拖车与吉普车搭档，承担了最末端也是最危险的战术运输任务。除了将成千上万吨的弹药和燃料运输到前线的每个战壕外，还装满了可口可乐、万宝路香烟、花花公子杂志和姑娘们的情书。

ROCHOBBY这台拖车以1/12比例呈现，对应的弹药箱，油桶、食品等补给物资也会陆续推出，可以搭配同样比例的吉普车使用，进一步增加仿真模型的故事性和真实感。

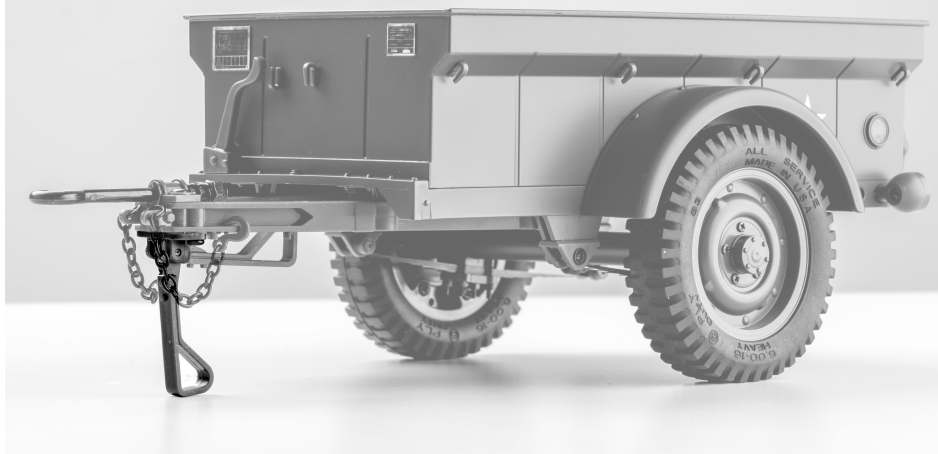
ASSEMBLE 组装

Remove all the parts from the box and Attach the trailer "A" frame to the cargo bucket.

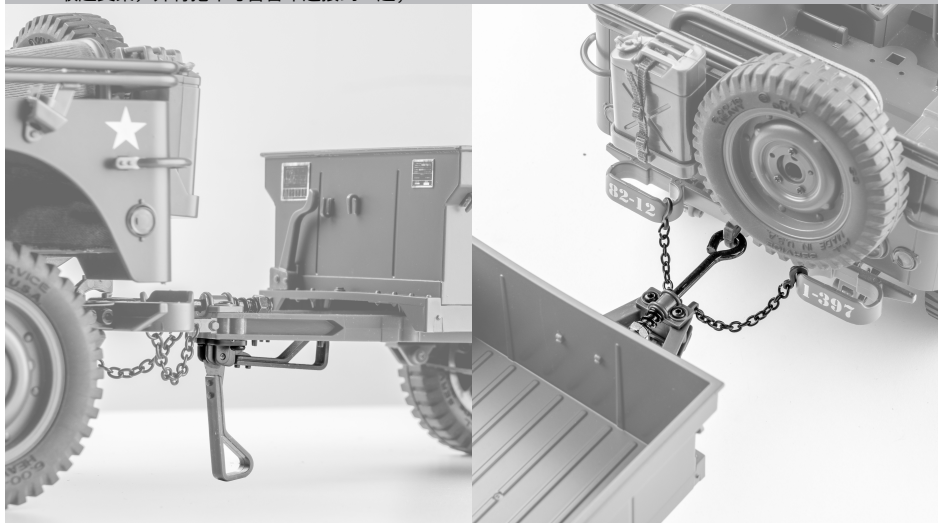
1. 取出包装盒内所有零件，将拖车车架与货斗组装到一起



2. Unfold the bracket to place the trailer separately and fold up when using the trailer.
展开支架以便单独摆放拖车，牵引拖车时收起支架；

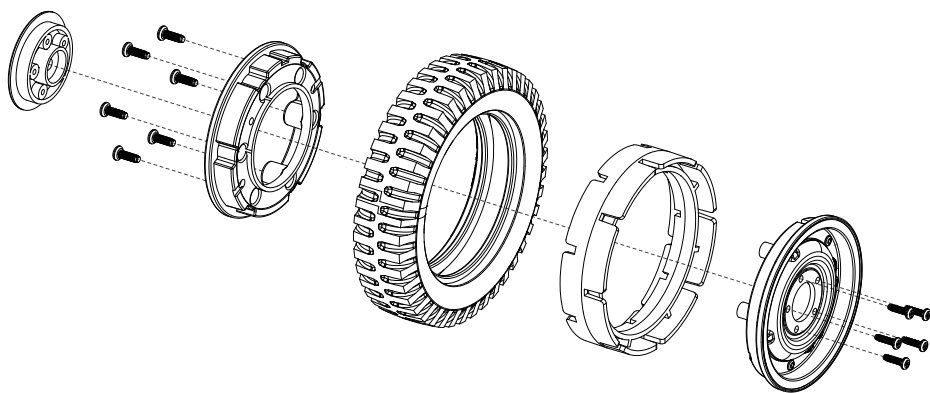


3. Retract the bracket and connect the trailer with the jeep;
收起支架，并将拖车与吉普车连接到一起；



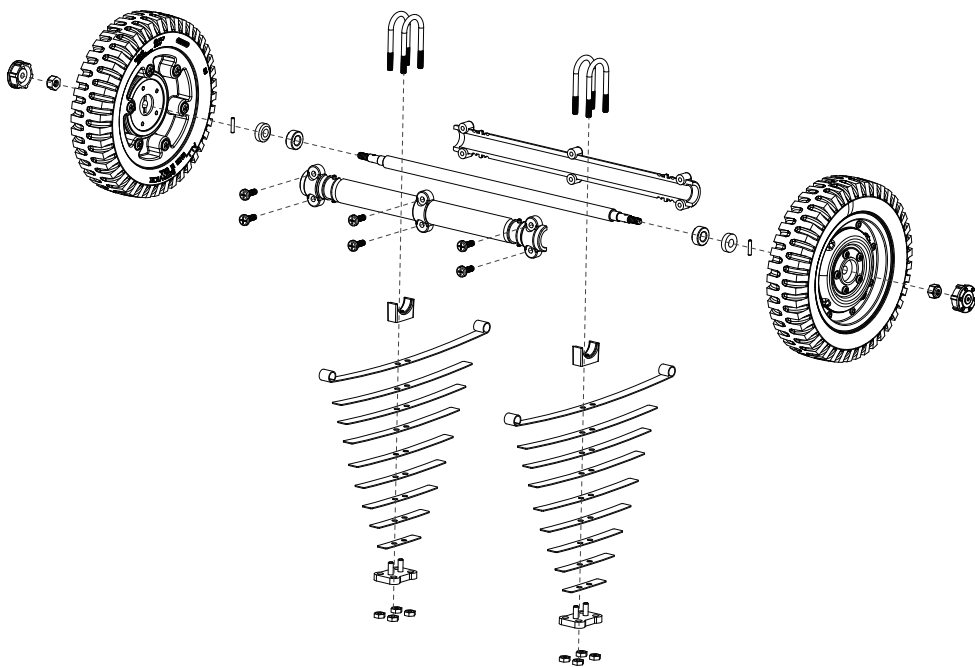
EN:Wheel Set

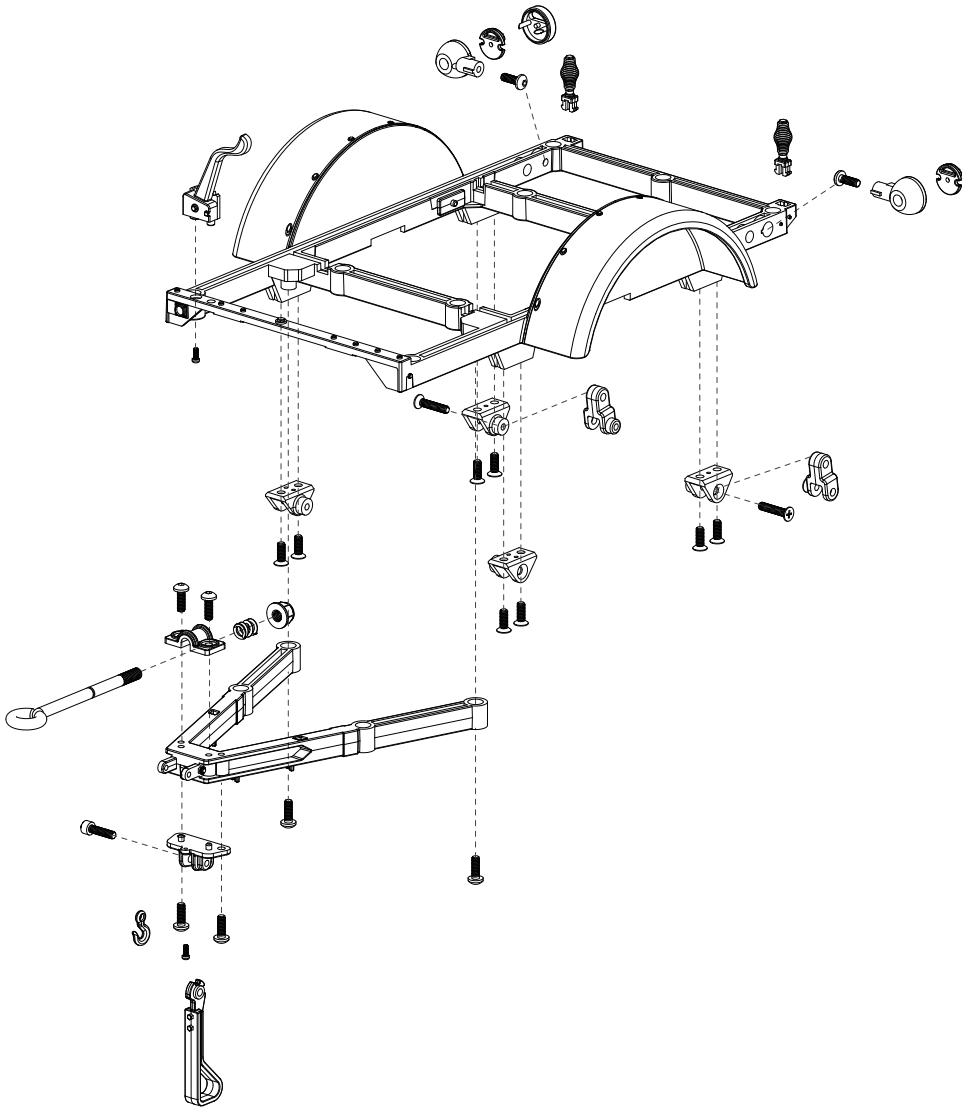
CN:轮胎总成



EN:Axle

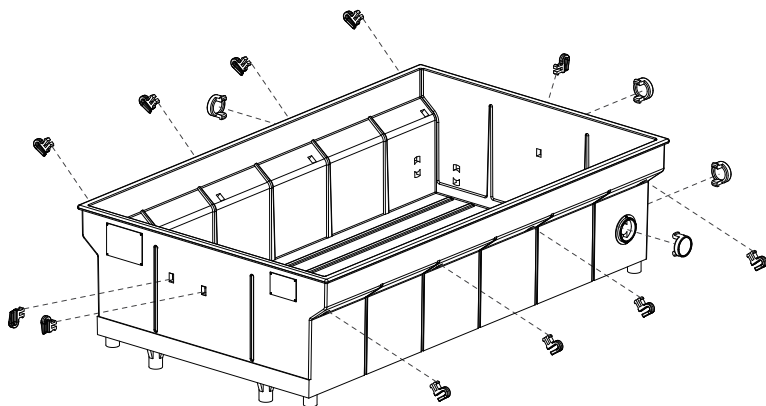
CN:车桥





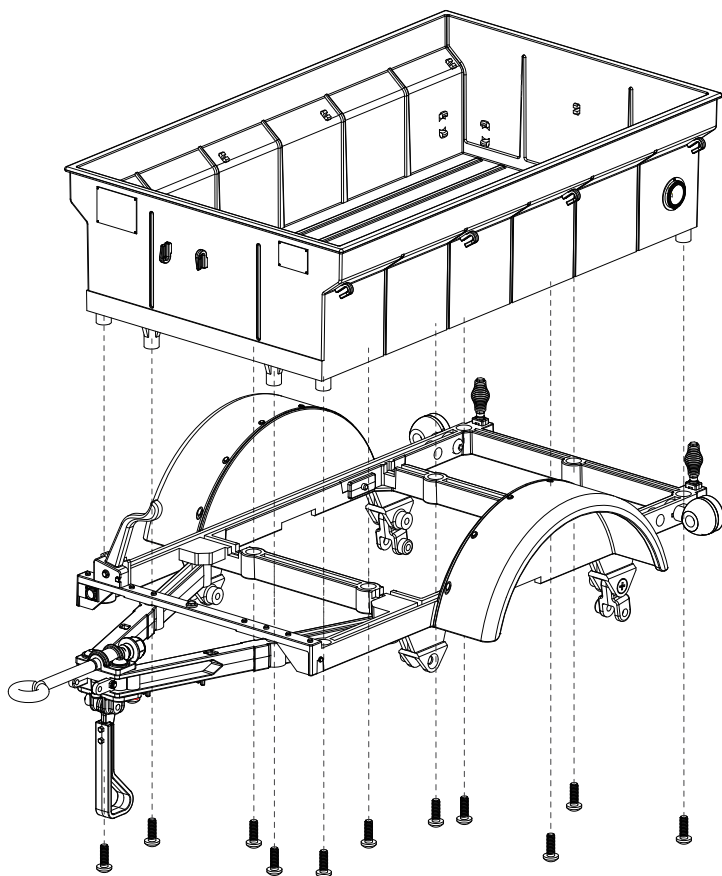
EN:Cargo bucket

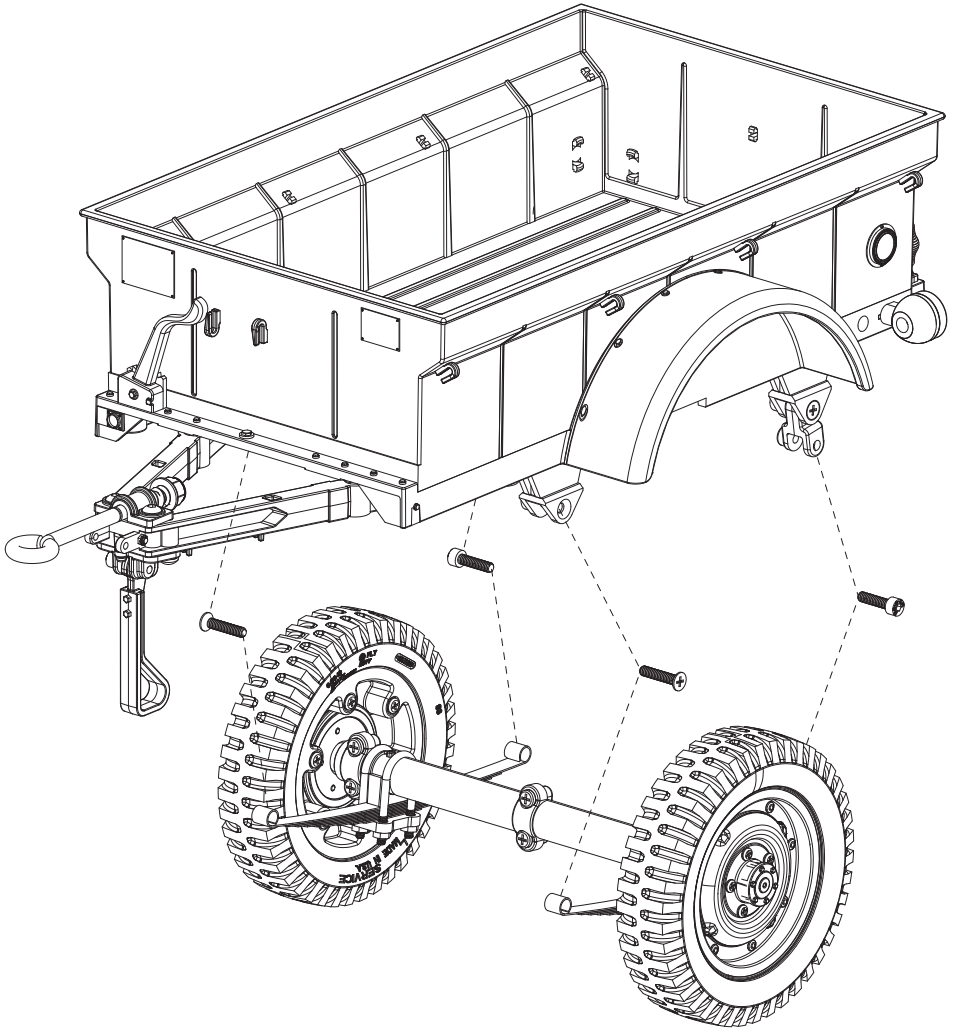
CN:车斗



EN:Trailer assembly

CN:拖车总装





RO HOBBY

MADE IN CHINA
CE   FC